

Ambassador

Electrically Operated Projection Screen with Automatic Ceiling Closure

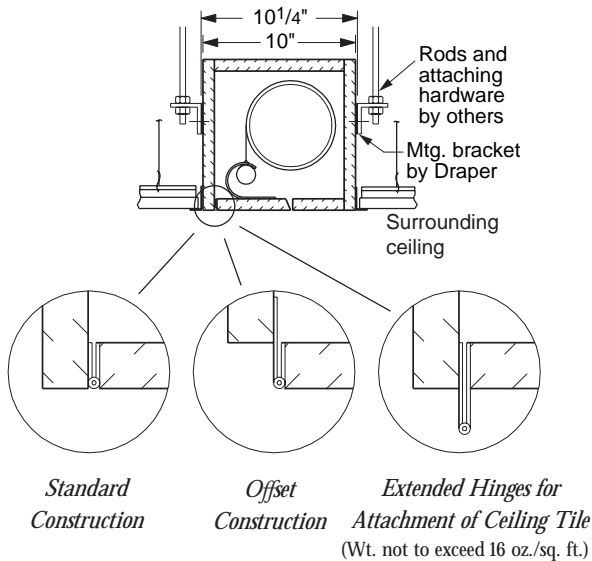
- *Designed for boardrooms,
conference and meeting rooms.*



The Draper Ambassador is a heavy-duty electrically operated screen designed specifically for recessed installation above any type of ceiling. The Ambassador is hand crafted of the finest quality components, assuring fast, silent, dependable operation.

The Ambassador features a fully automatic ceiling closure, which totally conceals the screen when not in use. At the touch of a switch the ceiling closure opens and the viewing surface appears. The viewing surface retracts into the ceiling when the switch is reversed, and the ceiling panel closes tightly. Adds an element of showmanship to any AV presentation. The ceiling closure can be finished by the contractor to match the ceiling.

Case Construction/Method of Installation



Available in fiberglass matt white, glass beaded, or optional F1500 viewing surface. All surfaces are flame and mildew resistant. Large screens require horizontal seams.

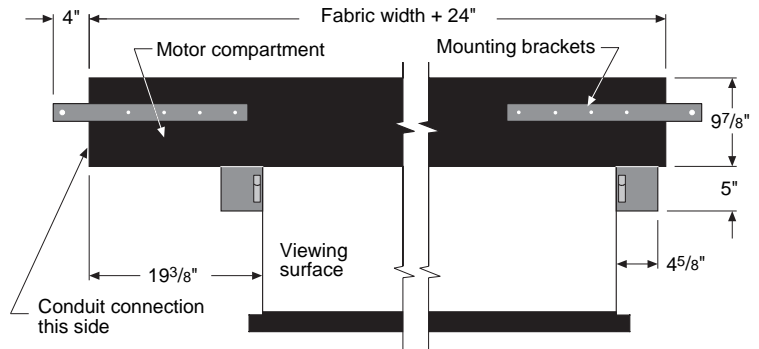
3-position switch, standard, controls screen from any remote position. Multiple station controls and key-operated switching are also available.

Optional Equipment

- *Extra Drop*—Up to 12' total screen height, either white or black (White is standard).
- *2' Black Masking Borders*
- *Control Options*—Refer to page 15.

Products Available from:
CES COMPANY
Phone: 707/664-9964
Fax: 707/664-9965
email: info@cescompany.com

Case Dimensions



Dimensions & Data—Ambassador

Viewing Surface HxW	Case Length	Net Wt. (lbs.)	Viewing Surface HxW	Case Length	Net Wt. (lbs.)
50" x 50"	6'2"	105	9' x 9'	11'	170
60" x 60"	7'	115	4' x 10'	12'	170
70" x 70"	7'10"	120	8' x 10'	12'	180
84" x 84"	9'	140	10' x 10'	12'	185
6' x 8'	10'	155	5' x 12'	14'	200
8' x 8'	10'	160	9' x 12'	14'	205
7' x 9'	11'	160	12' x 12'	14'	210

Case dimensions—9⁷/₈" high x 10¹/₄" wide
Mounting brackets extend 4" in length beyond ends of case.

Specifications—Ambassador

____ projection screens, size ____h. x ____w., electrically operated 110-120V. AC, 60 hz. Motor to be 3-wire, instantly reversible, lifetime lubricated, with thermal overload protector and mechanical brake. Motor mounted on rubber vibration insulators. Preset, accessible limit switches. Entire drive unit easily removed from case. 3-position control switch (or switches—specify number) to stop or reverse screen at any point. Control(s) complete with cover plate. Metal roller, 5" o.d. Zinc plated roller brackets with double row radial ball bearings. Viewing surface of (fiberglass matt

white/glass beaded/F1500), fire and mildew resistant.

Case of 3/4" warp resistant composition wood, with hinged panel for access to motor compartment, finished with primer coat of paint. Motor compartment metal lined. Bottom of case enclosed by two panels. One panel mounted on a continuous hinge, to open and close automatically when screen operates. Hinge mounted to allow matching of bottom panel to ceiling. Second panel semi-permanently attached to wall of case.

Entire unit certified by Underwriters' Laboratories, Inc. for the U. S. and Canada.